

# Coalition for Juvenile Justice Disproportionate Minority Contact Conference

October 23 – 25, 2010

*“Fundamental Fairness: Eliminating Racial and Ethnic  
Disparities in Juvenile Justice”*

The Role of Data in Reducing the  
Utilization of Secure Detention  
for African American Youth in  
Dallas County, Texas

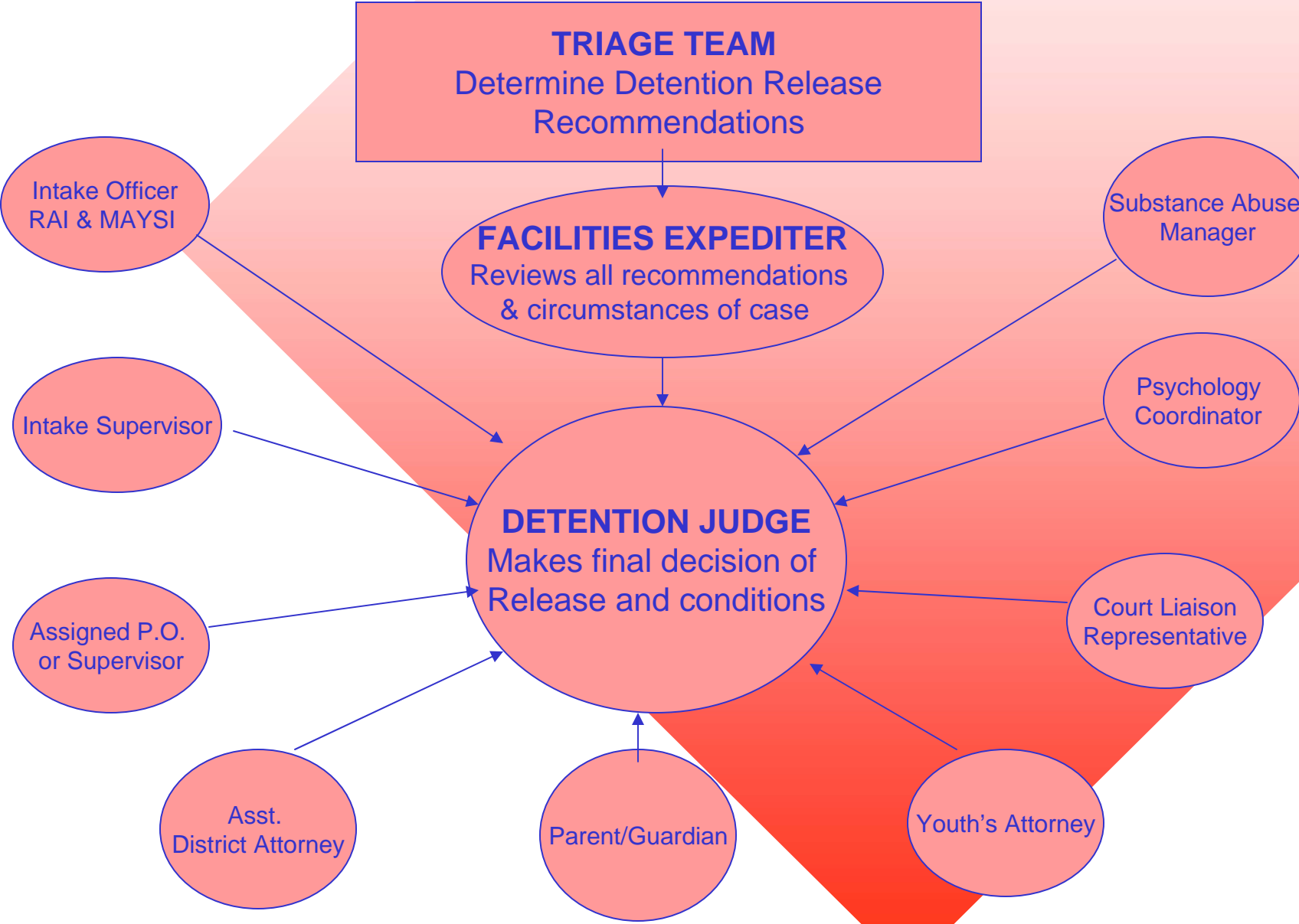


Judge Gracie Lewis

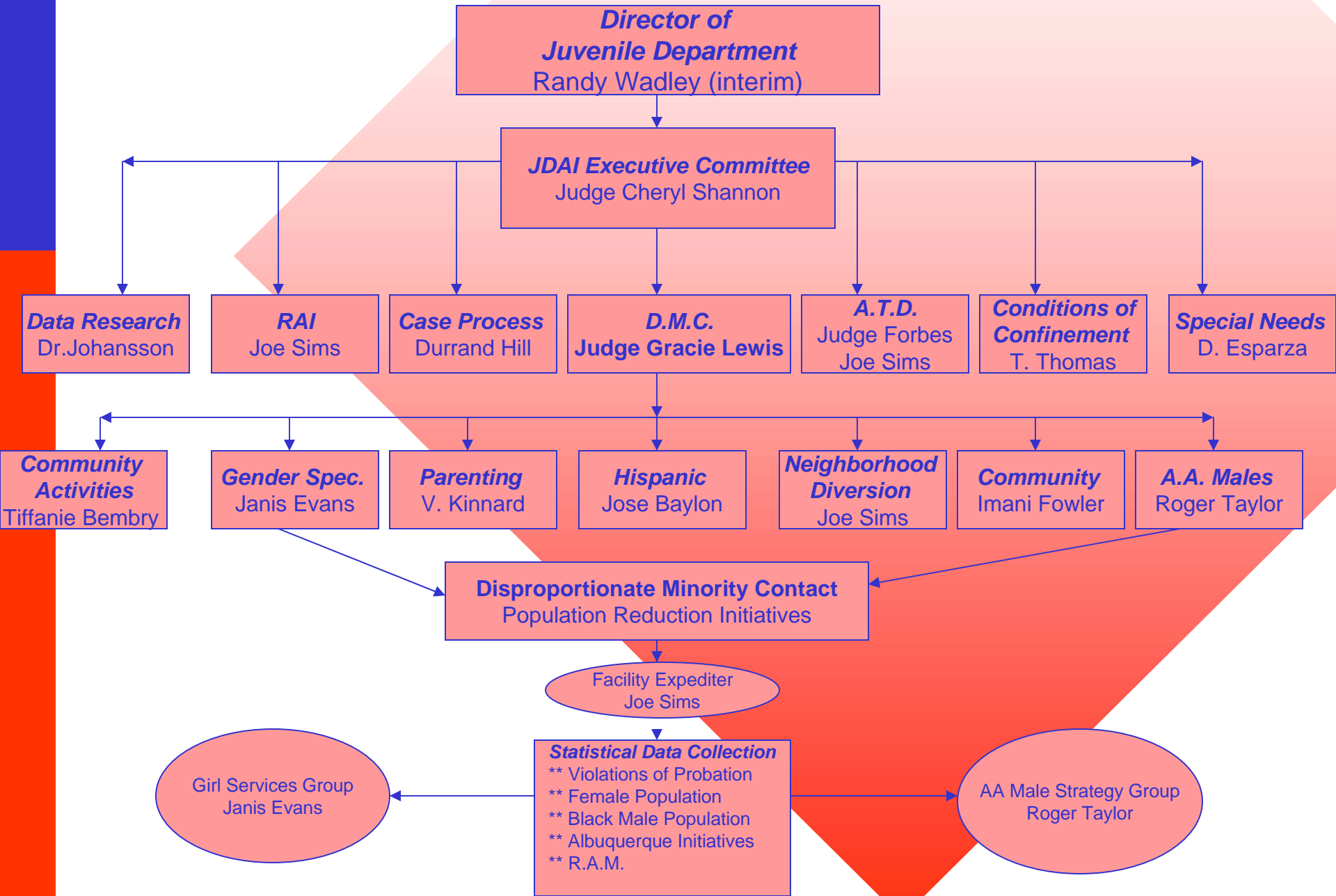
Dr. Michael Lindsey

Mr. Roger Taylor

# Dallas County JDAI Detention Intake Processing



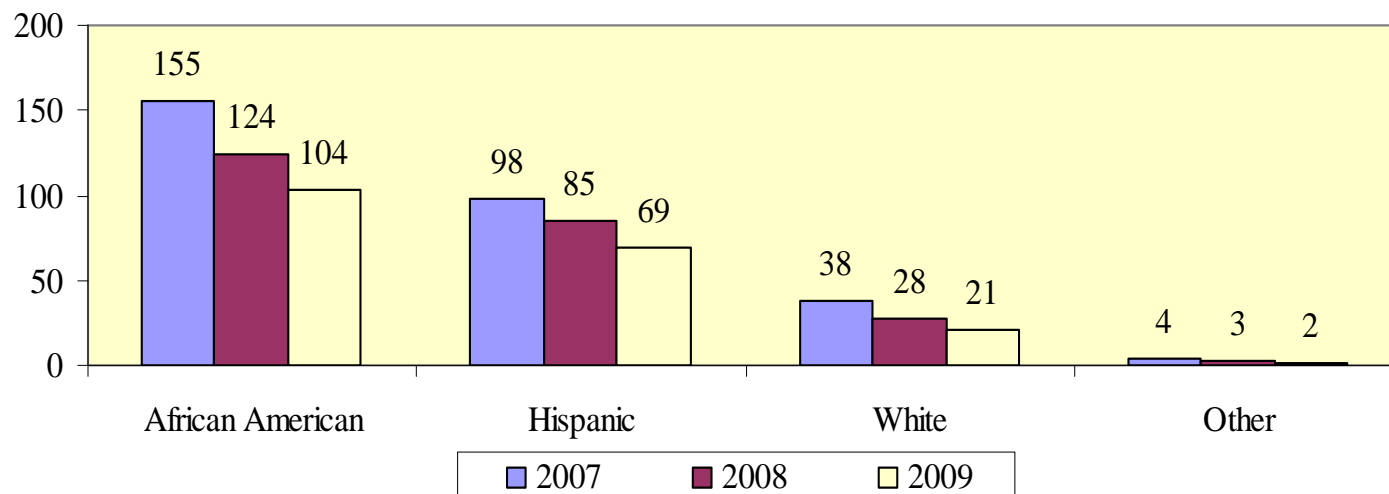
# JDAI - Dallas County Committee Flow Chart



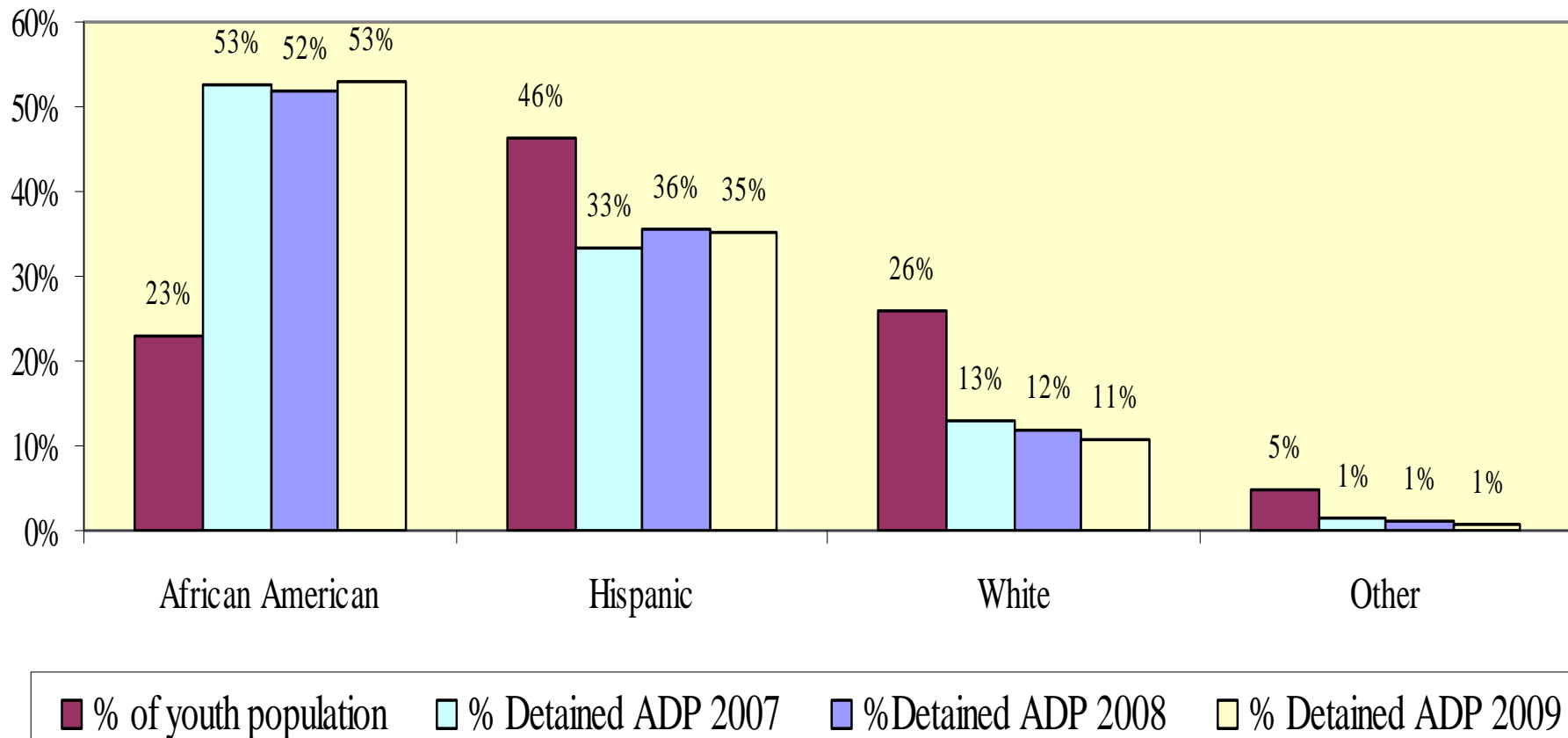
# ADP in Detention 2007 -2009

YEAR	African American	Hispanic	White	Other	Total
2007	155	98	38	4	295
2008	124	85	28	3	240
2009	104	69	21	2	195
Decrease 2007-2008	-31	-13	-10	-1	-55
Decrease 2008-2009	-20	-16	-7	-1	-45
% Change 2008-2009	-16%	-19%	-25%	-43%	-19%

**MINORS DETAINED (ADP) BY ETHNIC GROUP IN 2007, 2008 and 2009**



# Minors Detained (ADP) by Ethnic Group



Percent minors detained (ADP) by ethnic groups 2007, '08, '09  
Percent by ethnic group in Youth Population 2009

# Releases by Gender

	Male	Percent	Female	Percent
Released to Community	305	29%	94	26%
Total	1157		323	

This table represents the differences across gender for Violations of Probation being released from the detention to the community.

A slightly higher proportion of male VOPs were released to the community. (1/1/09 – 5/9/10).



# Length of Stay (LOS)

	Released out	Freq.	Percent	Cum.
-----+				
Placement and Other Agencies		1,081	73.04	73.04
Community		399	26.96	100.00
-----+				
	Total	1,480	100.00	.

LOS is the time between the date the youth was detained until the youth was released from detention.

About 27% of youth detained for violations of probation were released to the community (parent, grandparent, guardian etc.). The remaining 73% were released to placement facilities or other agencies. (1/1/09 – 5/9/10).



# Average Length of Stay (ALOS)

-> released out = Placement

Variable	Obs	Mean	Std. Dev.	Min	Max
los	1081	28.88344	26.11132	0	143

-> released out = Community

Variable	Obs	Mean	Std. Dev.	Min	Max
los	399	19.51378	19.9644	0	133

The ALOS for Violations of Probation released to the community was 19.5 days. ALOS for children released to placement or other agencies was 28.8 days. (1/1/09 – 5/9/10).





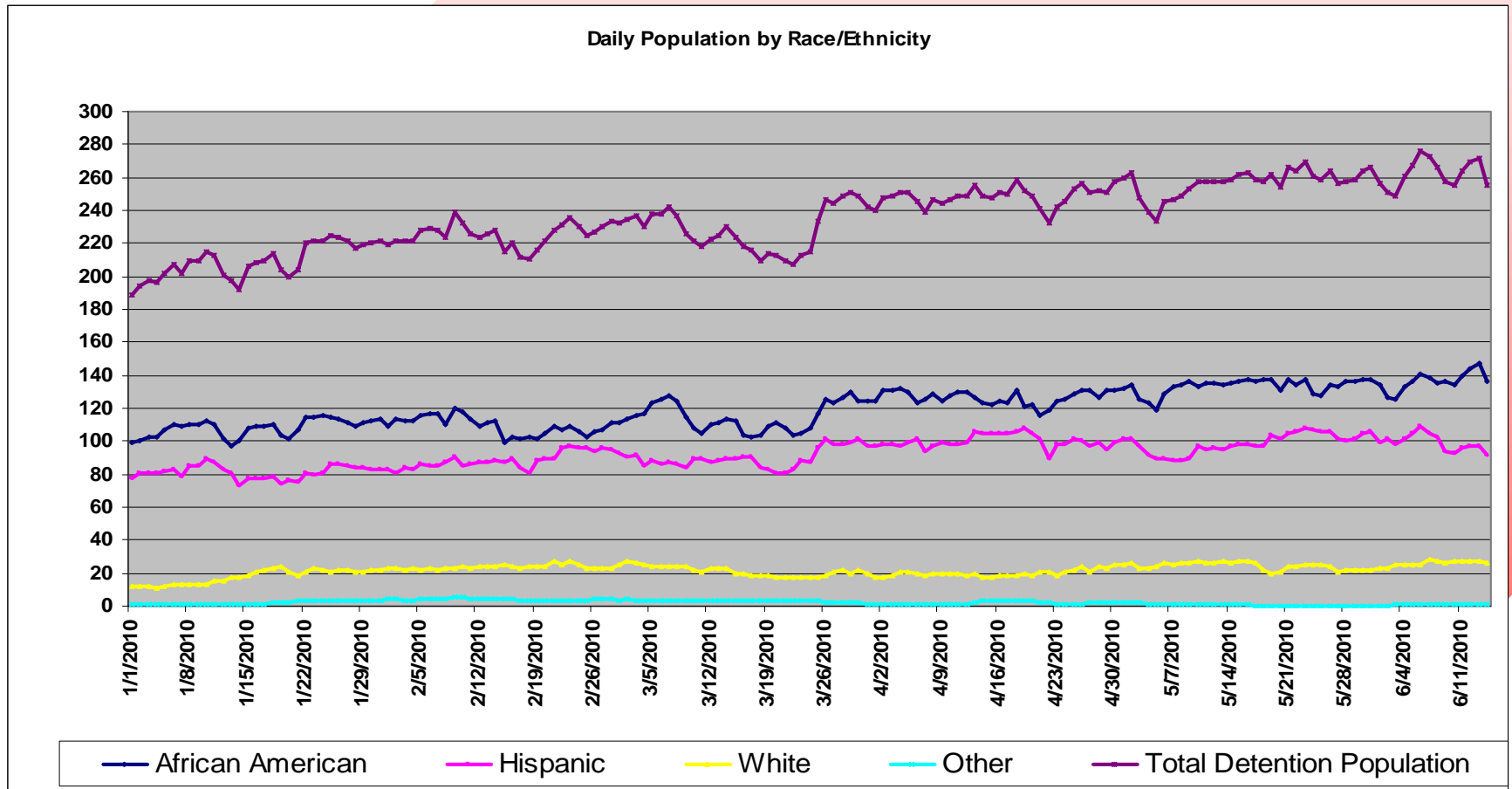
# ALOS Releases by Race

	<b>Freq</b>	<b>%</b>	<b>ALOS</b>
African American	210	53%	23
Hispanic	135	34%	15
White	49	12%	17
Other	5	1%	23
Total	399	100%	

This shows the differences in average length of stay (ALOS) by race/ethnicity if released to the community. (1/1/09 – 5/9/10).



# Daily Population by Race/Ethnicity 2010



# Releases by Race/Gender

	Male	%	ALOS	Female		ALOS
African American	147	48%	22	63	67%	25
Hispanic	115	38%	13	20	21%	21
White	41	13%	17	8	9%	16
Other	2	1%	14	3	3%	29
Total	305	100%		94	100%	

Hispanic males spent less amount of time in detention, than Blacks and white males. White females were detained about 10 days less than Black females and 6 days less than Hispanic females. Both Hispanic and Black females had larger lengths of stay than Hispanic and Black males. (1/1/09 – 5/9/10).



# Standard Violated Conditions

1/1/09 - 5/9/10

Condition	Freq.	Percent	Cum.
Commit no new offense	27	2.55	2.55
Report to PO	268	25.28	27.83
Be at residence	360	33.96	61.79
Attend school	158	14.91	76.70
Allow PO to visit you	5	0.47	77.17
Do not associate with	2	0.19	77.36
No intoxicating substances or drugs	118	11.13	88.49
Abide to Non-Residential Program rules	19	1.79	90.28
Impose additional sanctions	2	0.19	90.47
Other Conditions	17	1.60	92.08
Follow rules of Non-Res program and JD may	41	3.87	95.94
Abide to Non-Res program and Other Condition	39	3.68	99.62
Report to PO and Do not associate with	4	0.38	100.00
<b>Total</b>	<b>1,060</b>	<b>100.00</b>	

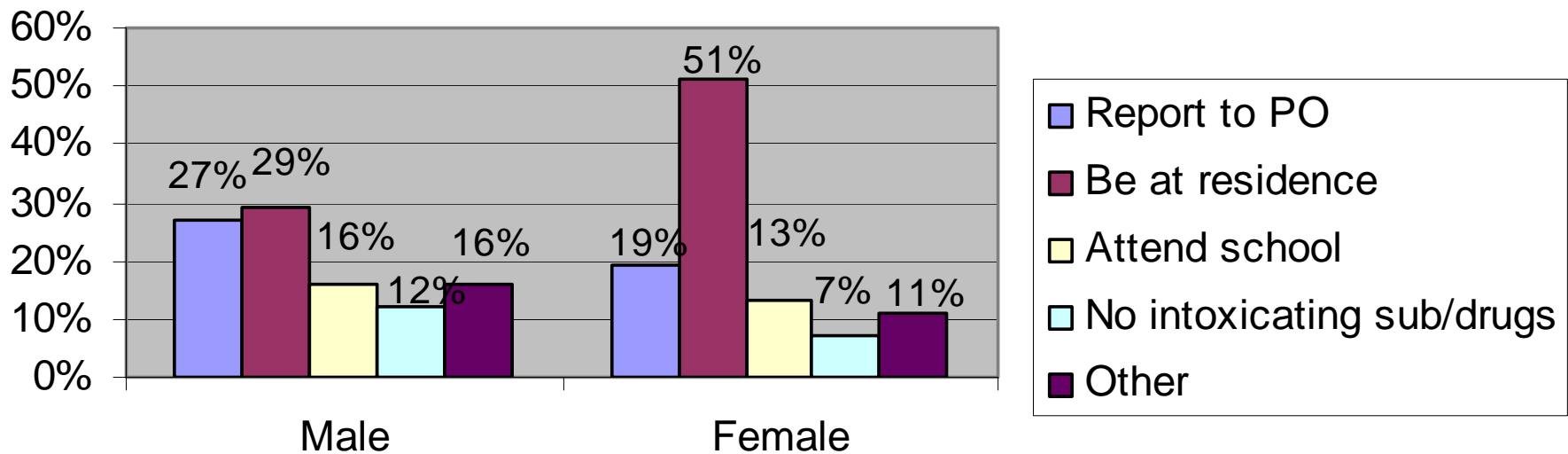


The following table shows the conditions of probation the youth violated. The top 4 violations include: curfew 34%, reporting 25%, school 15%, drugs 11% . Hence, DMC decided to focus on the most common violation conditions.



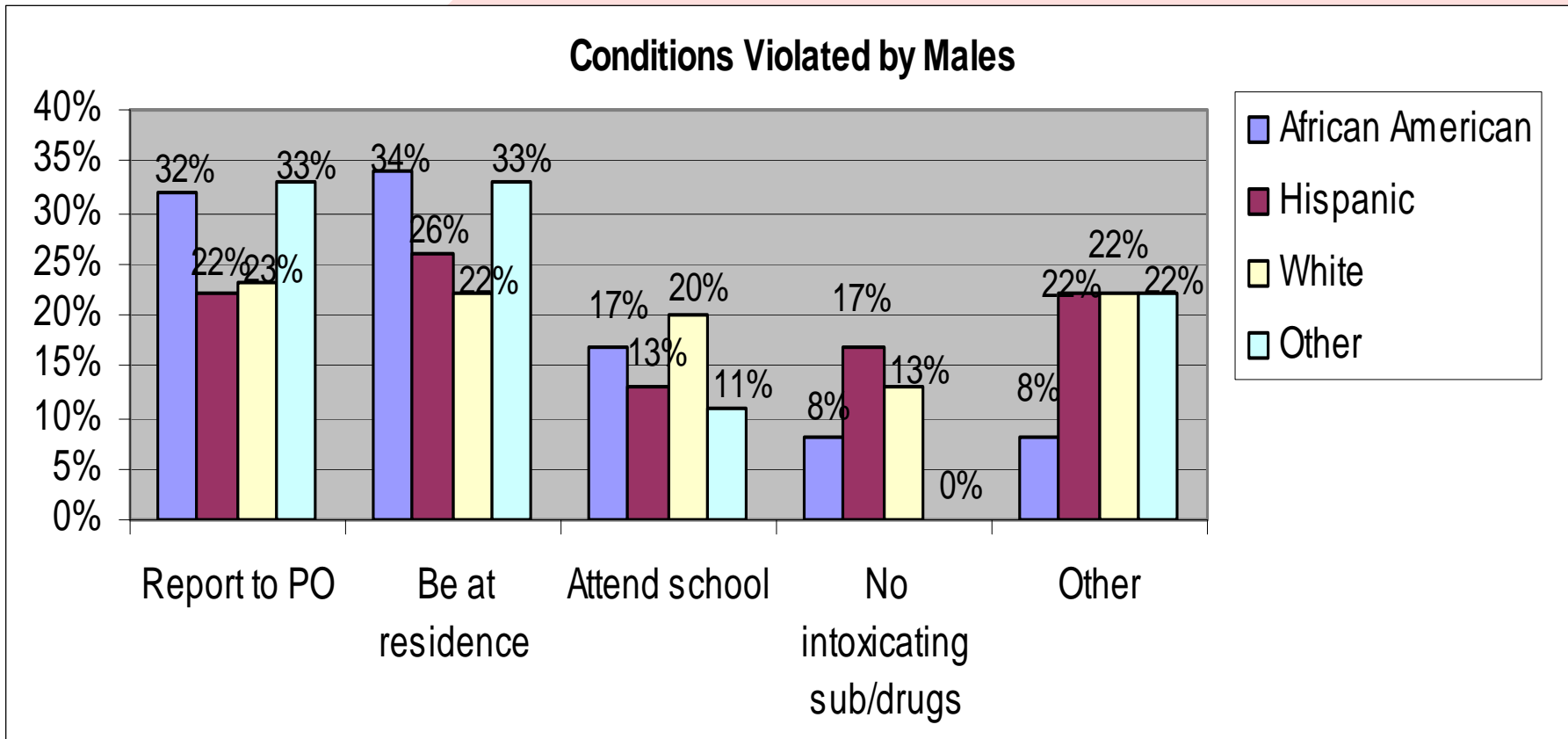
# Conditions Violated by Gender

## Conditions Violated by Gender



- A notably higher proportion of females violated curfew than males (29%).
- Males (12%) were almost twice as likely to violate the drug condition, females (7%).
- Males (27%) were also more likely to fail to report to their PO than females (19%).

# Conditions Violated by Race

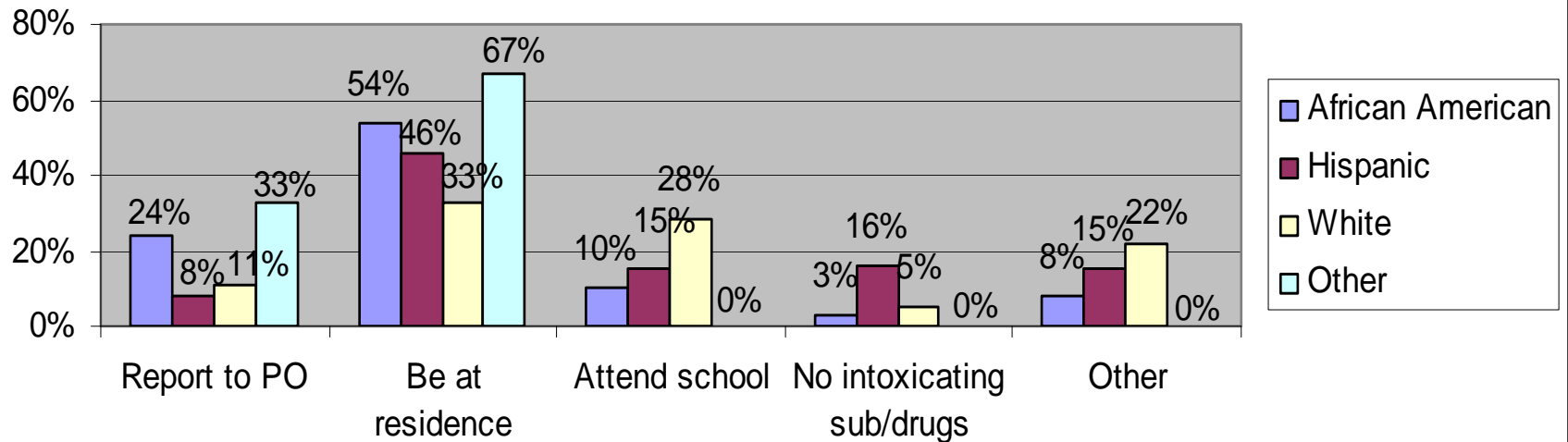


Failing to report to PO & curfew are the more common violations among Blacks as compared to Hispanic & Whites. Failing to attend school is more common for white probationers as compared to the other groups. Violating by using substances/drugs is more common among Hispanics as compared to the other groups. (1/1/09 – 5/9/10).

# Top 4 violations by females

Conditions Violated by Females	African American	Percent	Hispanic	Percent	White	Percent	Other	Percent
Report to PO	36	24%	5	8%	2	11%	1	33%
Be at residence	80	54%	29	46%	6	33%	2	67%
Attend school	15	10%	9	15%	5	28%	0	0%
No intoxicating sub/drugs	5	3%	10	16%	1	5%	0	0%
Other VOPs	12	8%	9	15%	4	22%	0	0%
<b>Total</b>	<b>148</b>	<b>100%</b>	<b>62</b>	<b>100%</b>	<b>18</b>	<b>100%</b>	<b>3</b>	<b>100%</b>

**Conditions Violated by Females**





# Violations of Placement by Race

Conditions Violated	African American	Percent	Hispanic	Percent	White	Percent
Obey Laws	1	1%	0	0%	0	0%
Remain at Placement	97	83%	29	67%	14	74%
Obey Rules of Placement	11	9%	5	12%	1	5%
Remain at Placement and no Absences	8	7%	9	21%	4	21%
<b>Total</b>	<b>117</b>	<b>100%</b>	<b>43</b>	<b>100%</b>	<b>19</b>	<b>100%</b>

This analysis is on those youth who violated conditions while already in a placement facility. The condition violated the most was failing to remain at the facility.



# DMC Population Reduction Initiatives

- African American Strategies Subcommittee Community Mentors Subcommittee
- Community Activities Subcommittee
- Girls Services Subcommittee
- Hispanic Subcommittee
- Neighborhood Diversion Subcommittee
- Parenting Subcommittee



# DMC Community Subcommittees

## Community Partners Committee

Focuses on Recruiting mentors for Juveniles in the system and Organizing community events that promote awareness of the importance of community involvement. Maintain a database of individuals and organizations that support sponsored events.

## Hispanic Committee

The committee focuses on activities that cultivate Hispanic awareness; sponsors Hispanic college sponsorship, fundraisers and provides Hispanic support to all the DMC activities.

## Neighborhood Diversion Committee

A Deferred Prosecution program that focuses on low level misdemeanors cases in the specific suburban Neighborhood where the youth lives.

## Parenting Committee

Provide public forums in schools, probation reporting sites and public arenas to bring awareness and education to families about the Juvenile Department and Charter school system.



# Girls Services Initiatives

- Girl's Circle Group
- Girl's Leadership Council
- VOP – Female Subcommittee



**DMC**

# A.A. Male Strategy Group

Initiatives to reduce DMC in detention:

- Facilities Expediter – Detention Cases
- Community Alternative Initiatives
- Revocation Alternative Meeting (RAM)
- Cognitive Response Group (CRG)



# Cognitive Response Group

Formed to address the subject's reasons for violating his/her conditions of probation. Using lecture, therapeutic exercises to the consequences of non-compliance.

- Once a Month
- Facilitated by 2 Probation Officers
- Group Exercises & Video Presentation
- Self Commitment Contract
- Performance Measures

**CRG**

# Revocation Alternative Meeting

RAM is a meeting facilitated by a neutral mediator. RAM is a high level staff response to persistent issues that have prevented the youth from being in compliance with court ordered terms and conditions of probation. It is limited to probationers with less than 3 months remaining on probation or those who are aging out of the system.

- Assesses strengths & needs
- Involves & gives voice to the family
- Prevents extreme sanctions or revocation
- Promotes inclusion for overall success
- Facilitated by a neutral mediator
- Allows the PO to modify conditions



**RAM**

# NEXT STEPS..

- Continuous Training to Stakeholders
- Data Collection
- Continued Implementation of Alternatives Initiatives





# Thank You!

Judge Gracie Lewis 214-653-5924

[glewis@dallascounty.org](mailto:glewis@dallascounty.org)

Dr. Michael Lindsey 214-698-4232

[michael.lindsey@dallascounty.org](mailto:michael.lindsey@dallascounty.org)

Mr. Roger Taylor 214-589-7652

[roger.taylor@dallascounty.org](mailto:roger.taylor@dallascounty.org)

